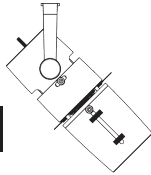


ARTY

PROFILE



Ljusdesign

S. Skeppsbron 4
802 80 Gävle
Sweden

info@ljusdesign.se
ljusdesign.se
+46 26 66 15 00

Arty Profile is a small full-featured Profile Spotlight. It's currently available for four different lighting systems.

Be sure you also read the instructions for your chosen lighting system as there are additional steps you need to take to get it set up.



Safety Instructions

Location. IP20. Only for indoor use. Do not install in wet or damp locations. Do not install the fixture where exposed bare connectors can be shorted or contact any conductive/combustible materials. Keep combustible material away from the fixture and lens.

Driver. Arty comes in 230V, 12V DC and Constant Current versions, please always refer to the label affixed to the luminaire for the recommended driver.

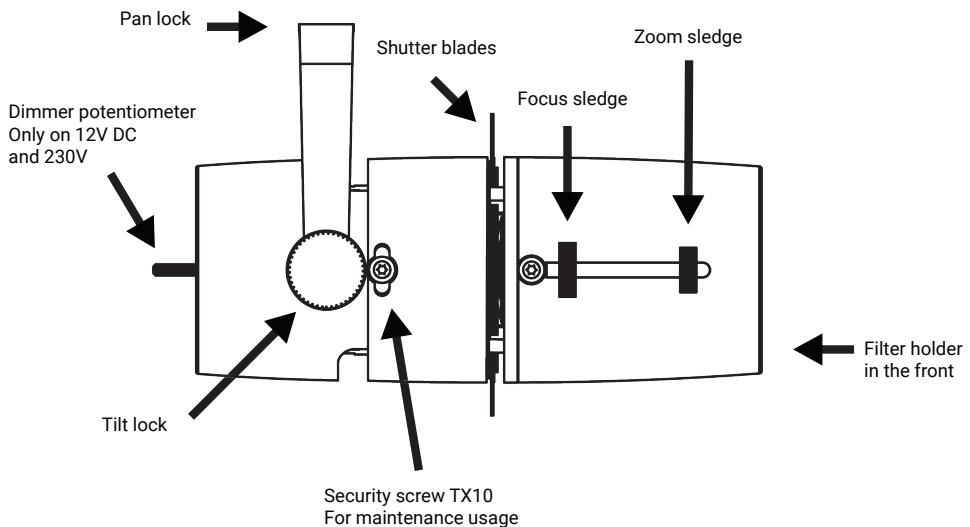
Constant Current note. Do not connect or disconnect fixtures under load.

230V and 12V DC note. Fixture has built-in dimmer. Not compatible with external or mains dimmer.

Technical

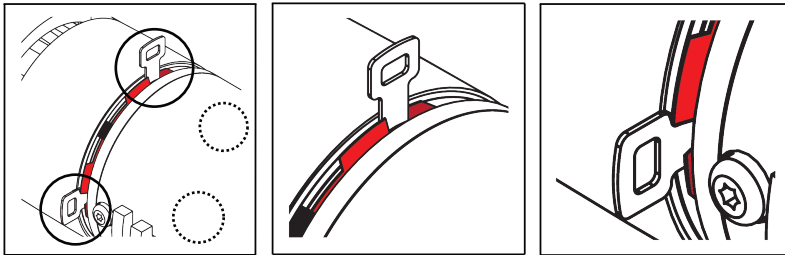
| | |
|-------------------|-------------------------------------------------------------------|
| Article numbers | ARTPZ* |
| Material | Aluminum Steel Anti-reflective glass |
| Finish | Grey (RAL 7040) Black (RAL 9005) White (RAL 9016) |
| Lighting systems | 3 Phase Circuit Track Pico Trac Mini Trac CC LED Profile |
| Protection class | IP20 |
| Power consumption | 6W/8W/10W |
| Beam angle | 25–50° |
| Swivels | >365° |
| Tilts | >90° |
| Accessories | Gobo Ø22,5 mm Filter |

Arty Profile Features Overview



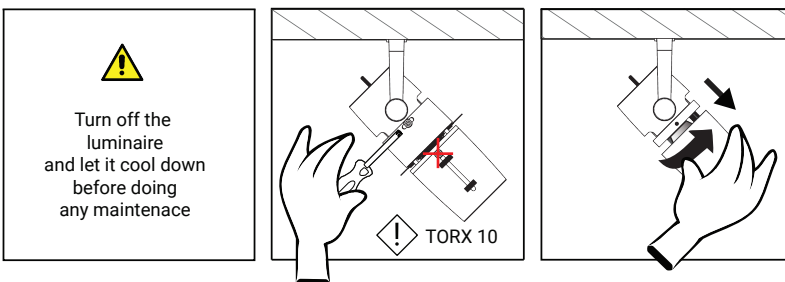
Shutters

To mount the shutters properly, place them between the guide plates on all four sides.



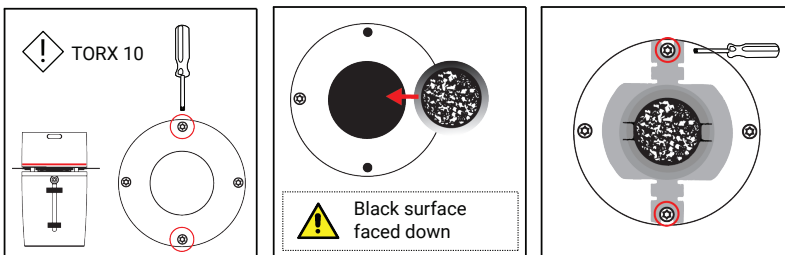
Maintenance

Unscrew the security screw on both sides. Twist and pull to get off the front piece.



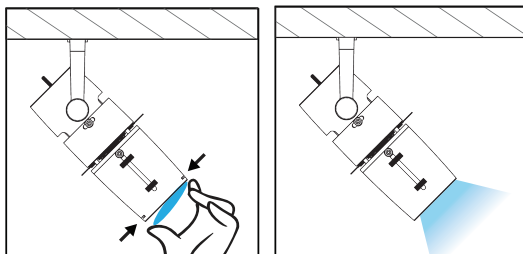
Gobo (optional)

Unscrew two parallel screws inside the front. Insert the glass gobo into the cavity. Screw the gobo holder on top.



Filter (optional)

Place the filter into the slot. Make sure it end up in both grooves.



Optics and cleaning

Sharpness is fully adjustable throughout the beam angle range. Though we recommend to use the profile with sharp beam edge for best results.

Cleaning:

1. Turn off the luminaire and let it cool down.
2. Use dry soft cloths to clean the exterior.
3. Use an oil-free air compressor to blow out dust every other year. Disassemble the front if necessary.