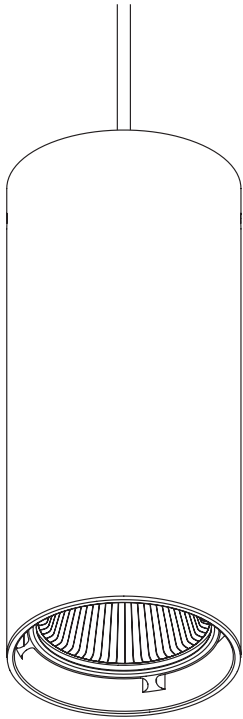


Index	2	Specifications	3
Safety information	2	Installation	4
Content	2	Reflector replacement	5
Technical	3	List of symbols	6



SAFETY INFORMATION

Do not stare into the LED

Qualified technician

Disconnect the power supply before installing or maintaining

Make sure all connectors are connected properly

Use a source of AC power that complies to local electrical codes

Block access below the work area when maintaining the unit

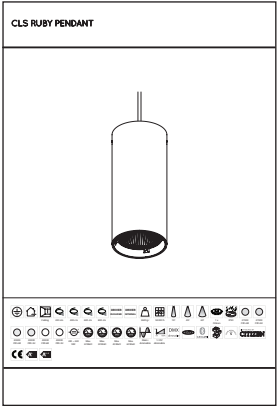
Don't modify or install genuine parts on this product

Don't install in a flammable or explosive area

Warning! Some surfaces can be hot

Ambiance Max. 40°

CONTENT



Ceiling

200 cm

400 cm

600 cm

800 cm

DRIVER INCLUDED

DRIVER INTERNAL

3600 gr

50,000 h

19°

49°

63°

1 x Citizen

IP20

2700K CRI>80

2700K CRI>92

3000K CRI>80

3000K CRI>92

4000K CRI>80

4000K CRI>92

200 ~ 240 VAC

Max. 22 Watt

Max. 30 Watt

Max. 45 Watt

Max. 60 Watt

Mains dimmable

1-10V dimmable

DMX dimmable

CAS-MBI

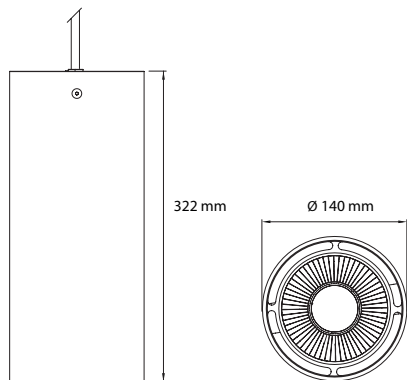
5

LIGHTSOURCE BY CITIZEN

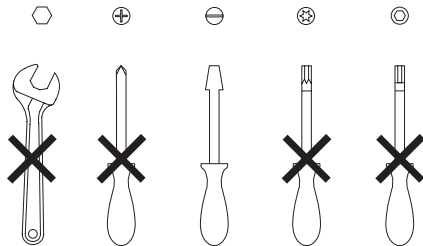
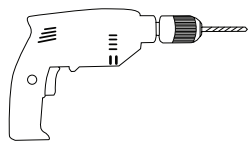
CE

A+

A++

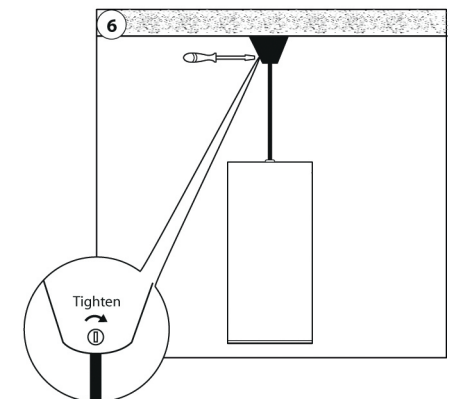
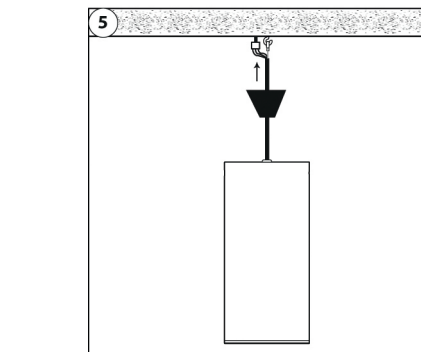
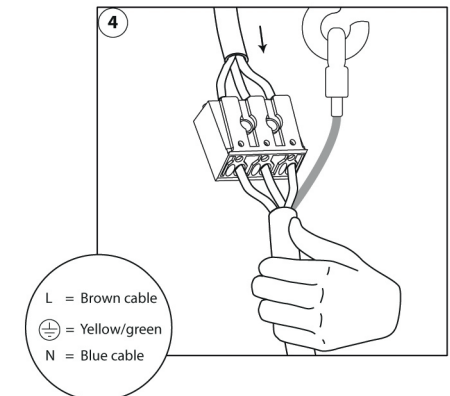
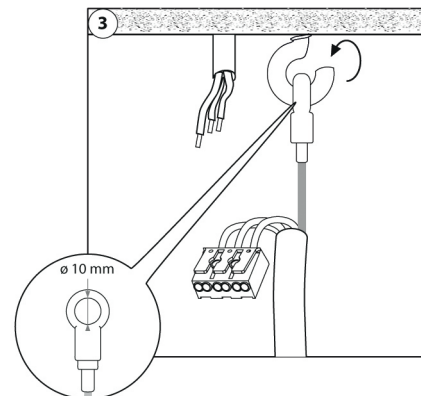
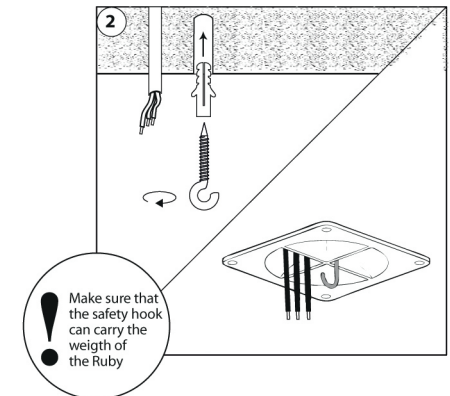
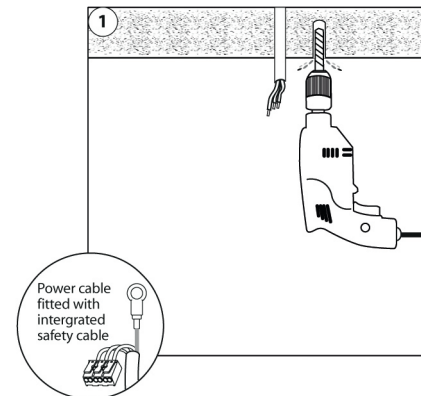


Tools

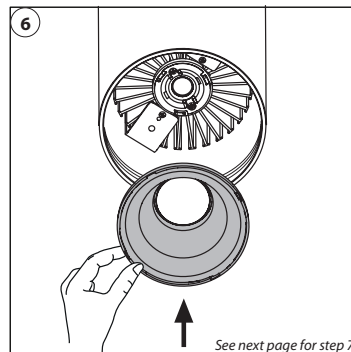
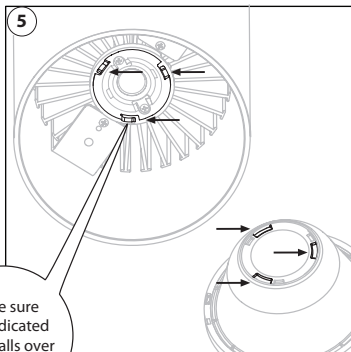
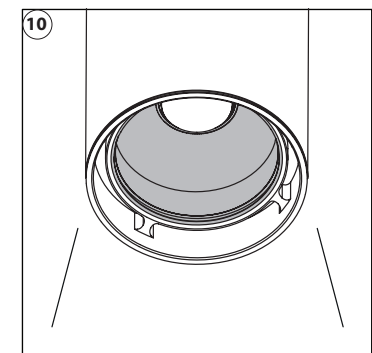
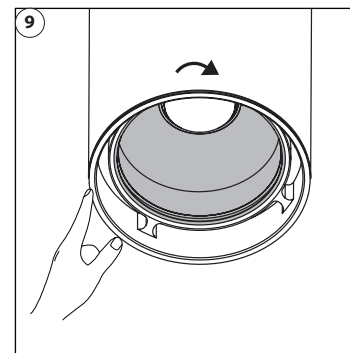
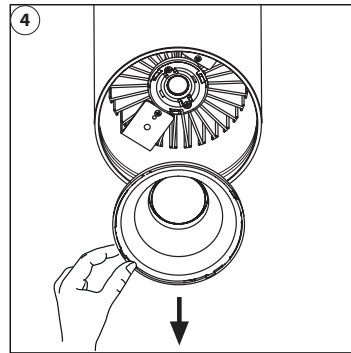
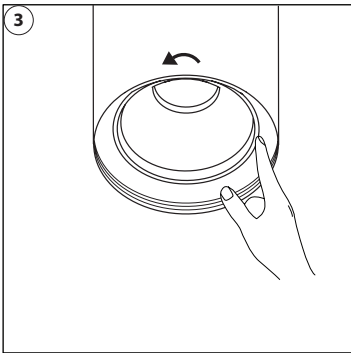
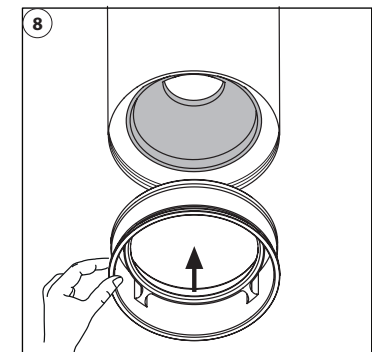
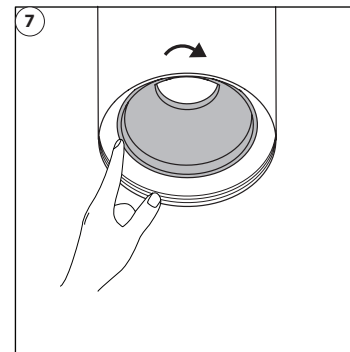
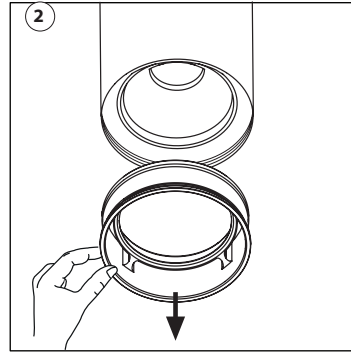
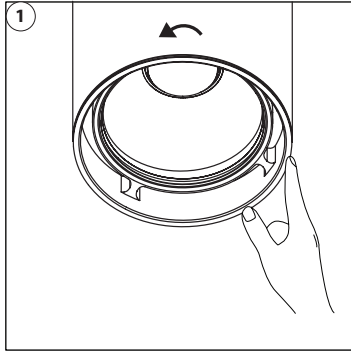


SPECIFICATIONS

LED:	1 x Citizen
Available colours:	CRI>80: 2700K, 3000K, 4000K CRI>92: 2700K, 3000K, 4000K (only for the 7 & 8 serie)
Lenses:	19°, 49°, 63°
Power supply:	200 ~ 240 VAC
Power consumption:	5 serie: Max. 22 Watt 6 serie: Max. 30 Watt 7 serie: Max. 45 Watt 8 serie: Max. 60 Watt
Housing:	Anodised aluminium black or white coated
Weight:	3600 gr
IP value:	IP20
Cable length:	200, 400, 600 or 800 centimeters
Measurements:	322 x 140 mm (h x ø)
Ambient temperature:	-10° C till +40° C



REFLECTOR REPLACEMENT



LIST OF SYMBOLS



Protection class
One, two or three



Application area
Indoor or outdoor



Application area
Floor, wall or ceiling



Swivel
Fixture is horizontally rotatable,
indicated in degrees



Swivel
Fixture is vertically rotatable,
indicated in degrees



Multiple connection
Daisychain connectivity



Installation depth
In centimeters



Installation size
In centimeters



Cable length
Maximum cable attached
to the fixture in centimeters



Driver
Inclusive or exclusive
Internal or external



Weight
In grams/kilograms



Pressure
Maximum pressure on the
fixture in kg/cm²



Lifespan
Of the light source in hours



Lenses
Available lenses,
indicated in degrees



Lenses
Available lenses,
indicated in degrees



LEDs
Kind of LED used in the
fixture



Plug & play
Easy connection using the
SmartConnect system



IP value
Ingress Protection classifies the
degrees of protection provided against
the intrusion of the product



Colour changing
RGB, RGB-W, RGB-A,
AWB or Tunable White



Retail & Food LED modules
Clothing, furniture, kitchens, jewellery,
shoes, bread, meat, fish and
vegetables & fruit.



Colour
Available colours;
Amber, blue, red or green



White colour temperature
In different Kelvin values;
Cold white, neutral white, warm
white or extra warm white



Curve
Minimal bending curve
in centimeters



Cutting length
Indicated by the cutting
marks



LED pitch
Pitch between the LEDs
in millimeters



Power supply
In VDC, VAC or milliAmpere



Power consumption
In VA or Watt



Dimmable
1-10 Volt, Phase, individual,
DMX dimmable or DALI



Bluetooth controlled
By Casambi



Magne dimming
Accurate dimming from
100 - 1% by using a magnet



Dynamic Control
Dynamic Power Control or
Dynamic Temperature Control



DMX input
Fixture works on DMX512
protocol



Combined product
Compose your own fixture



Warranty
3 or 5 years warranty on
the product



Conformité Européenne
CE marking for free marketability
of industrial goods within the EU



Energy label



Lightsource
Equipped with a CLS, Citizen or a Xicato
LED module

2018 CLS-LED BV. All rights reserved. Information subject to change without notice, CLS-LED BV and all affiliated companies disclaim liability for injury, damage direct or indirect loss, consequential or economic loss or any other loss occasioned by the use of, inability to use or reliance on the information contained in this manual. No part of this manual may be reproduced, in any form or by any means, without permission in writing from CLS-LED BV. Other legal information can be found in our General conditions, found on the back of your CLS-LED BV invoice, inside the CLS catalogue or on our website www.cls-led.com/General-Terms.pdf