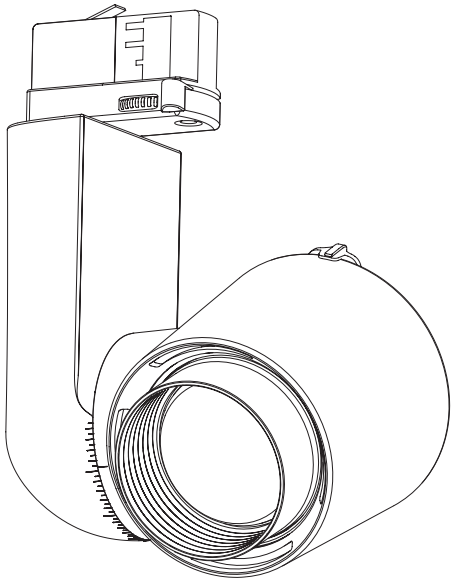




Index	2	Installation Jade Zoom	4	Snoot assembly	8
Safety information	2	Installation Jade C Zoom	5	Accessories	9
Content	2	Installation Jade B Zoom	6	Accessory overview	9
Technical	3	Accessory assembly	7	List of symbols	10
Specifications	3				



SAFETY INFORMATION

Make sure all connectors are connected properly

Use a source of AC power that complies to local electrical codes

Block access below the work area when maintaining the unit

Ambiance Max. 40°

Qualified technician

Disconnect the power supply before installing or maintaining

Warning! Some surfaces can be hot

Don't modify or install genuine parts on this product

Don't install in a flammable or explosive area

CONTENT

Ceiling

340°

350°

75-90 mm

C: 150 cm  
B: 200 cm

952 gr

50,000 h

9°-58°  
Citizen

11°-67°  
Xicato

IP20

2700K

3000K

3500K

4000K

100-240 VAC

25 Watt Max

Mains dimmable

Local dim

DMX dimmable

DALI dimmable

CAS/MBI  
Bluetooth  
by Casambi

DMX  
Wireless DMX

5 YEAR WARRANTY

CE

A+

LIGHTSOURCE BY CITIZEN

LIGHTSOURCE BY XICATO

Jade Zoom

OR

Jade C Zoom

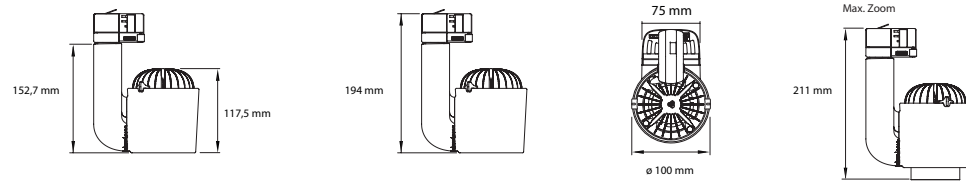
OR

Jade B Zoom

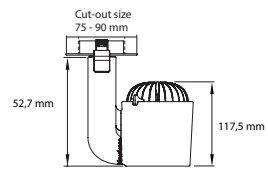
+

CLS JADE ZOOM SERIES

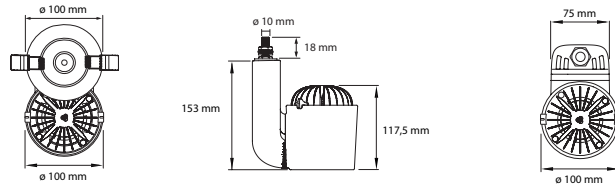
## Jade Zoom



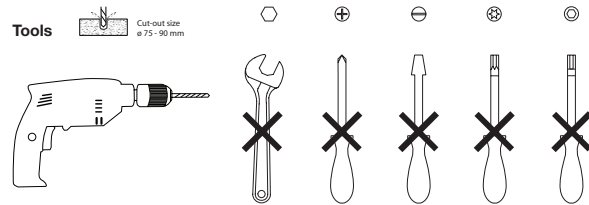
## Jade C Zoom



## Jade B Zoom

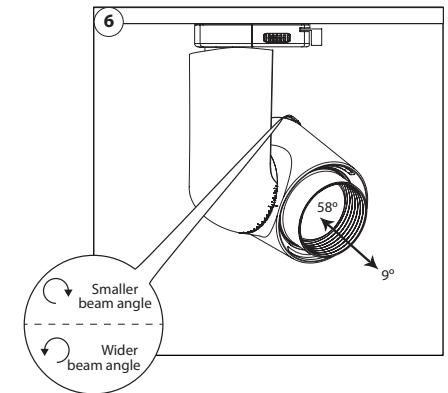
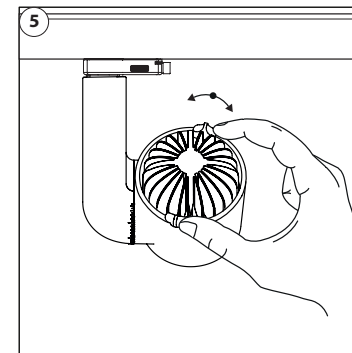
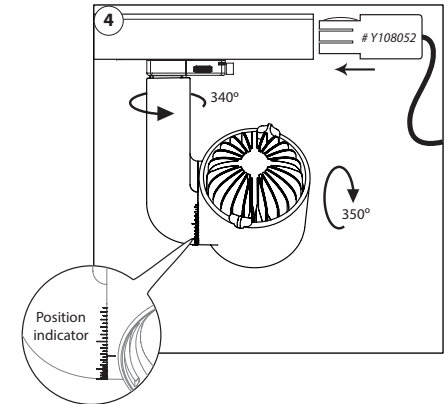
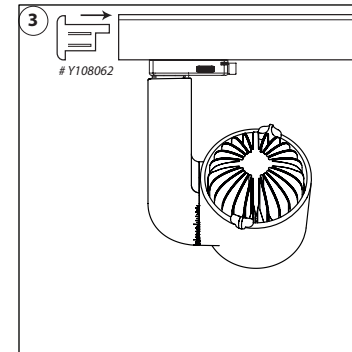
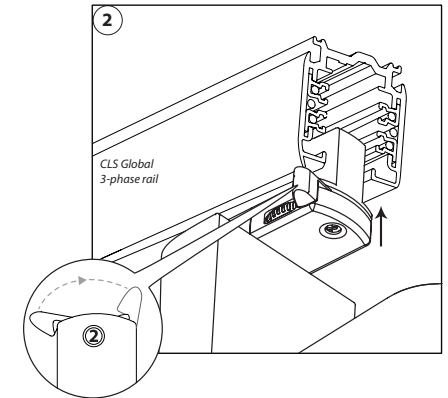
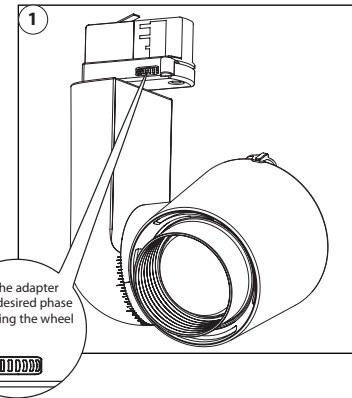


## Tools



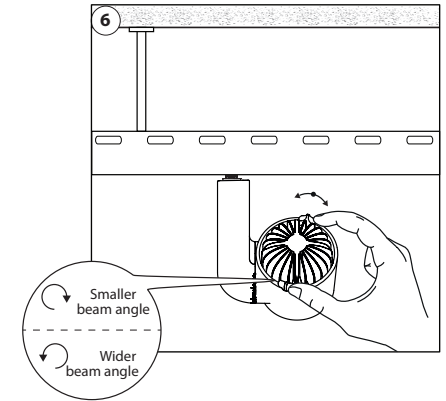
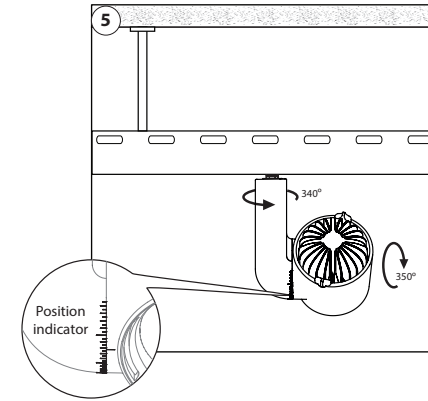
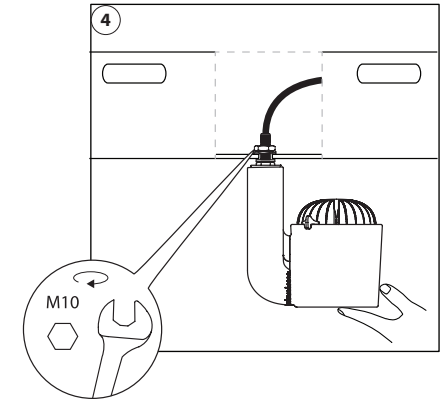
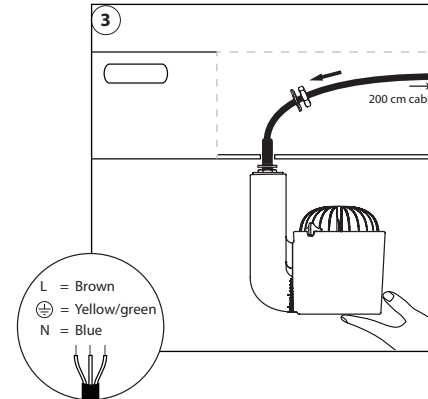
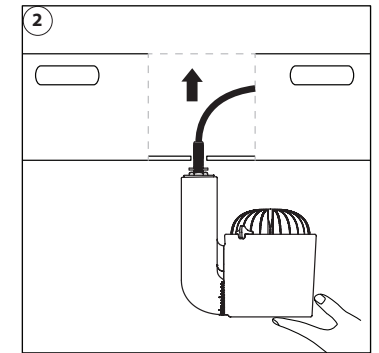
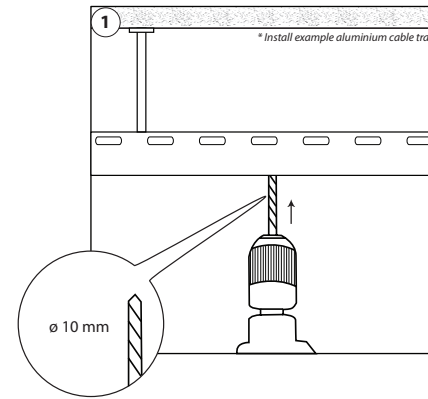
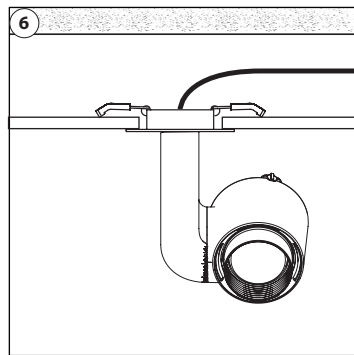
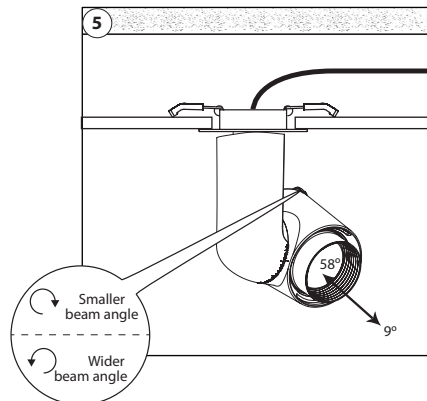
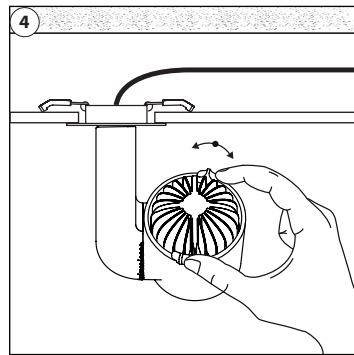
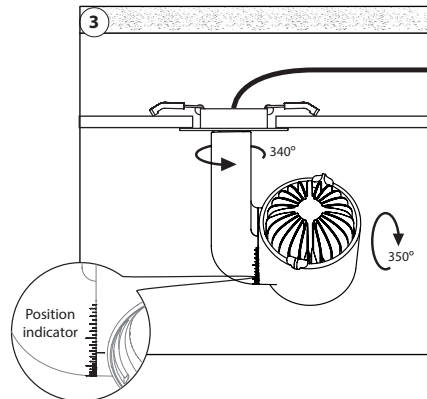
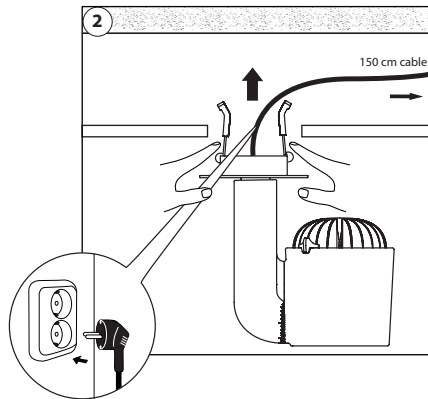
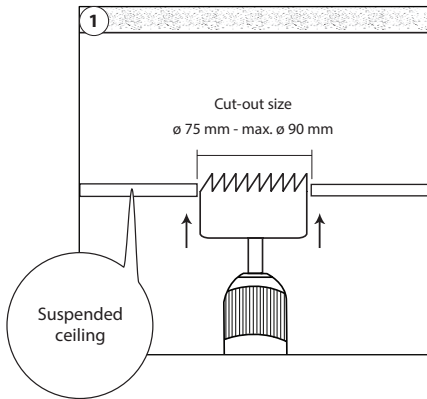
## SPECIFICATIONS

LED:	Citizen / Xicato
Available colours:	Citizen : 2700K, 3000K, 3500K & 4000K Xicato : 2700K, 3000K, 3500K & 4000K
CRI:	Citizen : CRI>92 or CRI>97 Xicato : CRI>97
Beam angle:	Citizen : 9° - 58° Xicato : 11° - 67°
Power supply:	100 - 240 VAC
Power consumption:	Max. 25 Watt
Housing:	Black, grey or white PC (PC-ABS V0) Heatsink black, grey or white coated aluminium
Weight:	925 gram
IP value:	IP20
Measurements:	152,7 x 100 x 100 mm (h x w x d)
Ambient temperature:	-10° C till +40° C

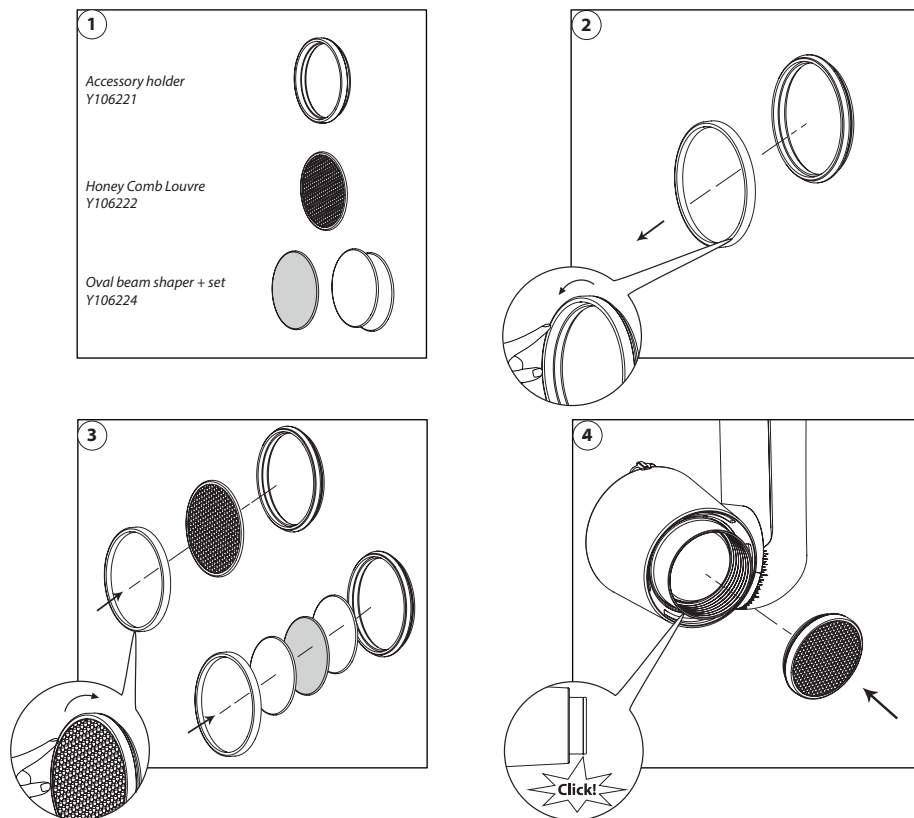


# INSTALLATION JADE C ZOOM

# INSTALLATION JADE B ZOOM

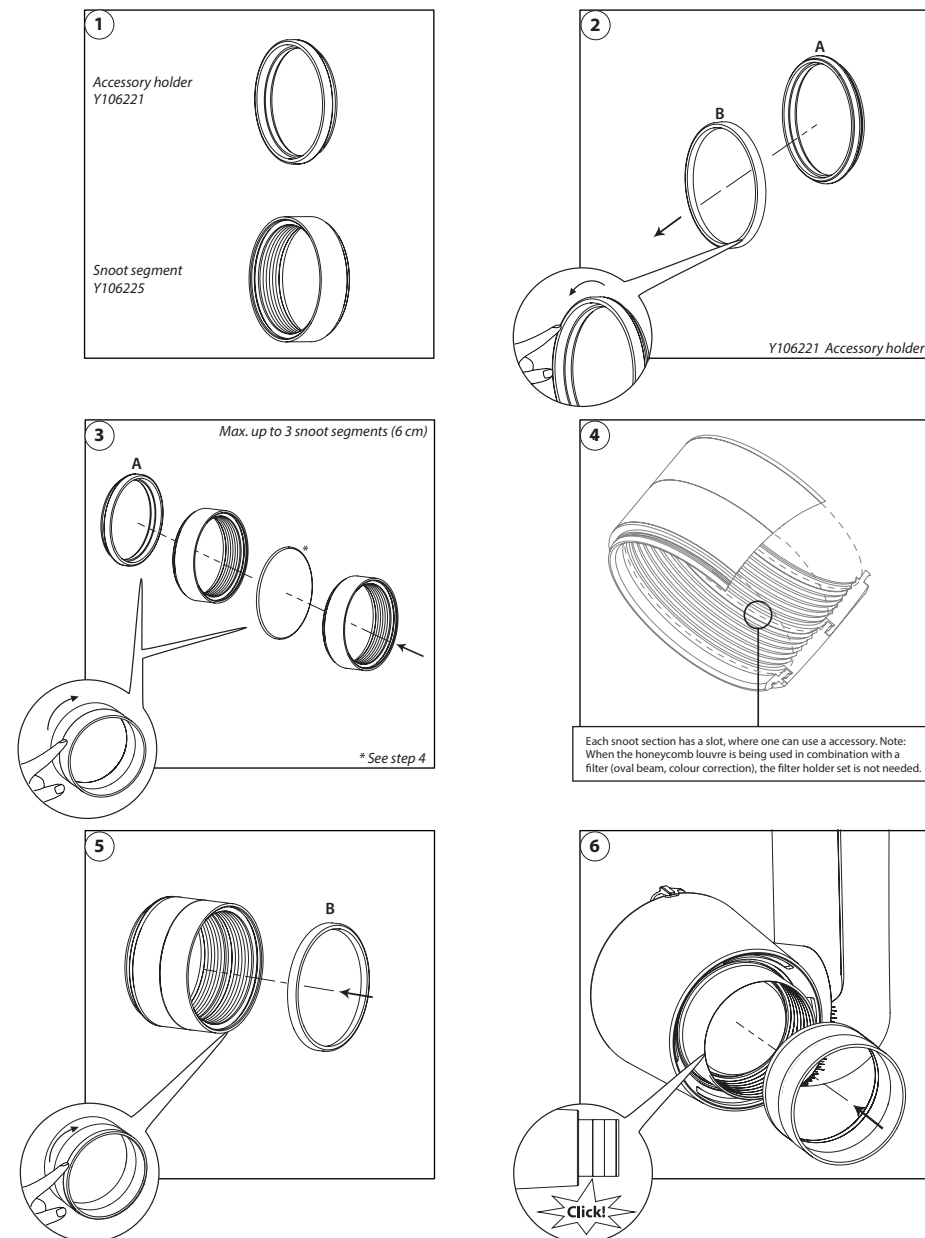


# ACCESSORY ASSEMBLY



2019 CLS-LED BV. All rights reserved. Information subject to change without notice, CLS-LED BV and all affiliated companies disclaim liability for injury, damage direct or indirect loss, consequential or economic loss or any other loss occasioned by the use of, inability to use or reliance on the information contained in this manual. No part of this manual may be reproduced, in any form or by any means, without permission in writing from CLS-LED BV. Other legal information can be found in our General conditions, found on the back of your CLS-LED BV invoice, inside the CLS catalogue or on our website [www.cls-led.com/General-Terms.pdf](http://www.cls-led.com/General-Terms.pdf)

# SNOOT ASSEMBLY




# ACCESSORIES












## ACCESSORIES

Y110855	CLS 3-phase multi adapter grey XTSA 68
Y110865	CLS 3-phase multi adapter white XTSA 68
Y110875	CLS 3-phase multi adapter black XTSA 68
Y110880	CLS T-connector grey for 3-phaserail, ground left
Y110881	CLS T-connector black for 3-phaserail, ground left
Y110882	CLS T-connector white for 3-phaserail, ground left
Y110925	CLS 3-phase rail 1mtr aluminum XTS 4100
Y110926	CLS Global 3-phase rail 2 metre aluminum XTS 4200
Y110927	CLS Global 3-phase rail 2mtr black XTS 4200
Y110928	CLS Global 3-phase rail 3mtr aluminum XTS 4300
Y110929	CLS Global 3-phase rail 4mtr aluminum XTS 4100
Y110930	CLS Global 3-phase rail 3mtr white XTS 4300
Y110931	CLS Global 3-phase rail 3mtr black XTS 4300
Y110932	CLS Global 3-phase rail 4mtr black XTS 4400
Y110935	CLS end piece for 3-phase rail grey XTS 41
Y110938	CLS end piece for 3-phase rail black XTS 41
Y110939	CLS end piece for 3-phase rail white XTS 41-3
Y110945	CLS connection box for 3-phase rail, grey XTS 11
Y110946	CLS connection box for 3-phase rail, grey XTS 12
Y110950	CLS connection box for 3-phase rail black XTS 11

Y110954	CLS L-connector grey for 3-faserrail, ground left
Y110955	CLS L-connector grey for 3-faserrail, ground right
Y110960	CLS connect piece gray (connect rail-rail) XTS
Y110961	CLS connect piece white (connect rail-rail) XTS21
Y110962	CLS connect piece black (connect rail-rail) XTS
Y110965	CLS hanging bracke for 3-phase rail, grey SKB16
Y110966	CLS hanging set, grey SKB12 with 1.5 mtr steel
Y110970	CLS bending tool XTSV 12
Y110980	CLS round mountingdisk GA70 grey
Y110985	CLS round mountingdisk GA70 white
Y110990	CLS round mountingdisk GA70 black
Y106149-B	Accessory ring Black
Y106149-W	Accessory ring White
Y106202-B-1	CLS Jade Zoom Barndoor, black
Y106202-W-1	CLS Jade Zoom Barndoor, white (black inside)
Y106221	Accessory holder
Y106222	Honeycomb Louvre
Y106223	Filter holder set
Y106224	Oval beam shaper + Filter holder set
Y106225	Snoot segment, 2 cm

## Accessory Overview

Choose your accessory on the left, you need the items marked with the  \*

						
	Y106221	Y106202-X-1	Y106222	Y106225	Y106223	Y106224
 Barndoor		✓				
 Honeycomb	✓		✓			
 Snoot	✓			✓		
 Filter set	✓				✓	
 Oval Beam set	✓				✓	✓

\*All accessories can be combined together

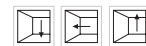
# LIST OF SYMBOLS



**Protection class**  
One, two or three



**Application area**  
Indoor or outdoor



**Application area**  
Floor, wall or ceiling



**Swivel**  
Fixture is horizontally rotatable, indicated in degrees



**Swivel**  
Fixture is vertically rotatable, indicated in degrees



**Multiple connection**  
Daisychain connectivity



**Installation depth**  
In centimeters



**Installation size**  
In centimeters



**Cable length**  
Maximum cable attached to the fixture in centimeters



**Driver**  
Inclusive or exclusive Internal or external



**Weight**  
In grams/kilograms



**Pressure**  
Maximum pressure on the fixture in kg/cm²



**Lifespan**  
Of the light source in hours



**Lenses**  
Available lenses, indicated in degrees



**Performance Zoom**  
Adjustable beam angle



**LEDs**  
Kind of LED used in the fixture



**Plug & play**  
Easy connection using the SmartConnect system



**IP value**  
Ingress Protection classifies the degrees of protection provided against the intrusion of the product



**Colour changing**  
RGB, RGB-W, RGB-A, AWB or Tunable White



**Retail & Food LED modules**  
Clothing, furniture, kitchens, jewellery, shoes, bread, meat, fish and vegetables & fruit.



**Colour**  
Available colours: Amber, blue, red or green



**White colour temperature**  
In different Kelvin values: Cold white, neutral white, warm white or extra warm white



**Curve**  
Minimal bending curve in centimeters



**Cutting length**  
Indicated by the cutting marks



**LED pitch**  
Pitch between the LEDs in millimeters



**Power supply**  
In VDC, VAC or milliAmpere



**Power consumption**  
In VA or Watt



**Dimmable**  
1-10 Volt, Phase, individual, DMX dimmable or DALI



**PWM dimming**  
Traditional PWM dimming, DMX analog or DMX Hybrid dim



**Bluetooth controlled**  
By Casambi



**Magne dimming**  
Accurate dimming from 100 - 1% by using a magnet



**Dynamic Control**  
Dynamic Power Control or Dynamic Temperature Control



**DMX input**  
Fixture works on DMX512 protocol or Wireless DMX



**Combined product**  
Compose your own fixture



**Warranty**  
3 or 5 years warranty on the product



**Conformité Européenne**  
CE marking for free marketability of industrial goods within the EU



**Energy label**



**Lightsource**  
Equipped with a CLS, Citizen or a Xicato LED module